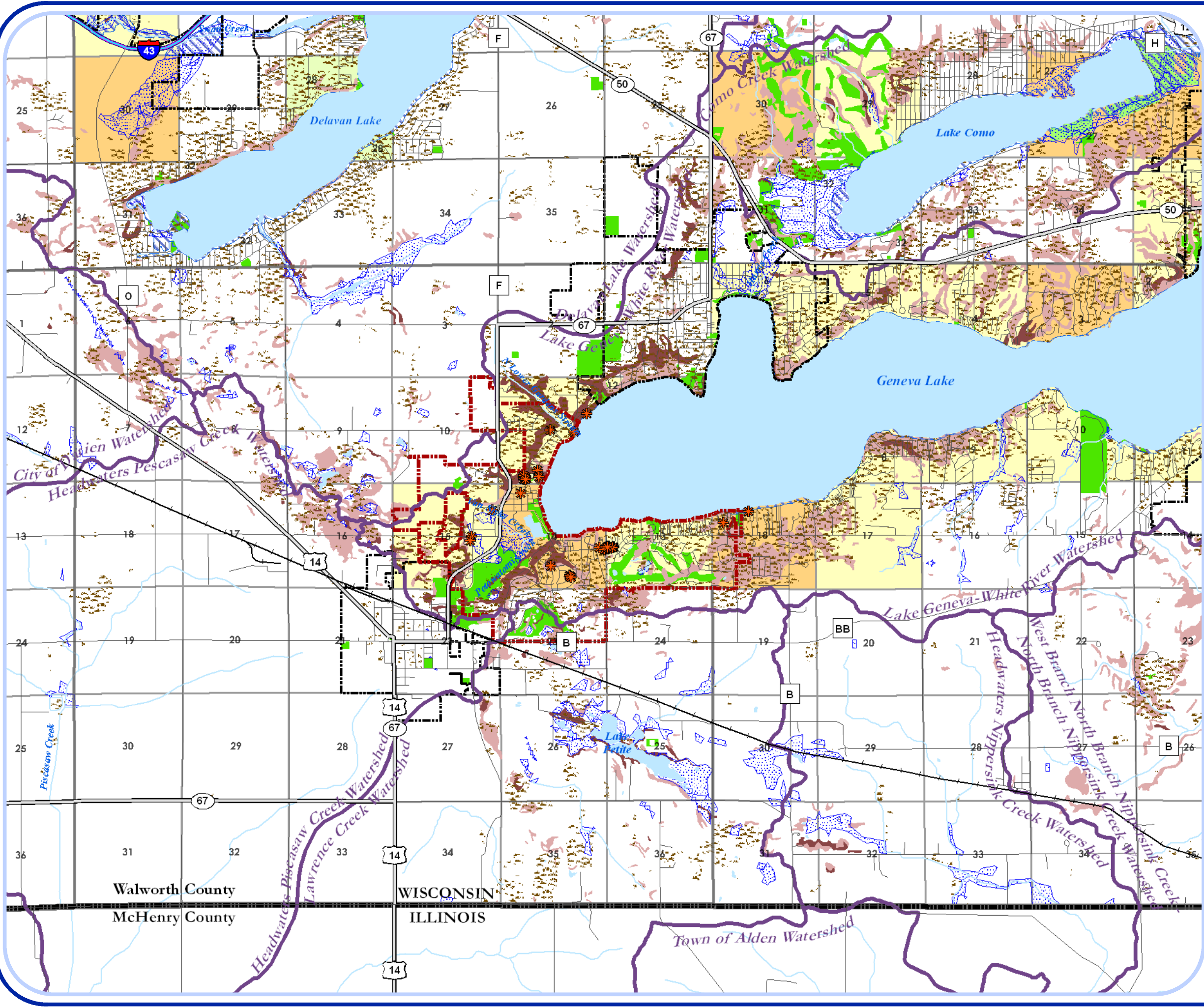
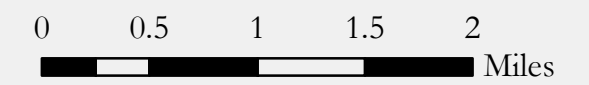


Fontana Comprehensive Plan



- Village of Fontana
- Other City/Village Boundary
- Township Boundary
- County Boundary
- Section w/Section Number
- Interstate
- Major Road
- Local Road
- Railroad
- Public Park & Recreation
- Conservancy
- Woodland
- Surface Water
- Watershed Boundary
- Wetland
- Floodplain
- Steep Slopes**
- 12% to 19%
- 20% and Greater
- Sections Containing Rare or Endangered Species**
- Aquatic Species
- Terrestrial Species
- Both Types
- Building/site listed in the National and/or State Register of Historic Places

Source: ESRI Streets (2008), Wetland Data - WIDNR (2006), Floodplain Data - FEMA (2004), Slope Data - USDA (2002), Species Data - WIDNR, SEWRPC, V&A



W
N
E
S

Fontana
on Geneva Lake

March 25, 2009

VANDEWALLE & ASSOCIATES INC.
Shaping places, shaping change